

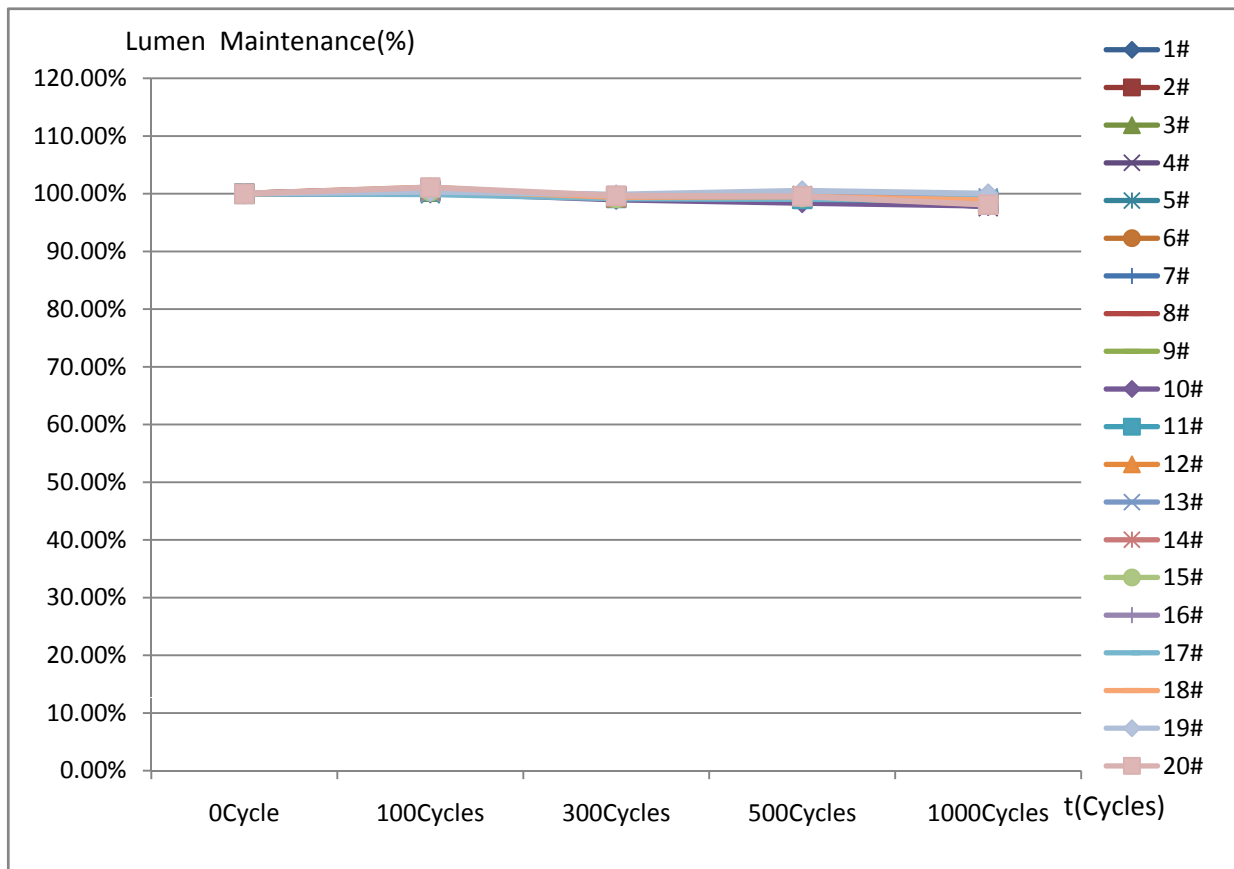
检测报告(简版)

报告编号: LAB0206014-01

第 1 页共 6 页

1. 客户名称: 深圳瑞丰_通用封装事业部_照明事业部_产品技术一部_中小功率产品组/赵治凡
2. 样品编号: 1#~20#
3. 产品规格(型号)/批次: RF-W6HP32DS-AF-I3/SC17-200507071
4. 检测时间: 2020. 6. 4~2020. 7. 1
5. 检测设备: LED阵列快速测试系统(G118471CA833115); 温度冲击试验箱(141152)
 FLUKE万用表(34700492WS); 回流焊炉(N0842010); 电热鼓风干燥箱(TST1005028)
 显微镜(MT 4X); DSX500光学电子显微镜(4B43960)
6. 环境条件: (22~28)℃, (30~70)%RH
7. 检测依据标准: 环境试验 第二部分: 试验方法 试验N: 温度变化 GB/T 2423. 22-2012
 LED的测量 CIE127: 2007
8. 检测项目: 冷热冲击试验
9. 检测条件: 预处理: 125℃烘烤2H, 回流焊1次(参照SMT回流焊说明WI-R00-004文件)
 -40℃(15min)~100℃(15min), 转换时间10s, 试验时间1000Cycles, 测试电流100mA,
 积分球2π测试, 测试点: 0Cycle, 100Cycles, 300Cycles, 500Cycles, 1000Cycles

Φ (lm) 试验变化图



检测: 黄凯 2020.07.02

审核: 张水城 2020.07.06

批准: 张引祥 2020.07.07

检测报告(简版)

报告编号: LAB0206014-01

第 4 页共 6 页

序号	Φ (lm)					Lumen Maintenance (%)				
	0Cycle	100Cycles	300Cycles	500Cycles	1000Cycles	0Cycle	100Cycles	300Cycles	500Cycles	1000Cycles
1#	110.50	110.80	110.20	110.20	109.50	100.00%	100.27%	99.73%	99.73%	99.10%
2#	122.10	122.80	121.60	121.30	120.10	100.00%	100.57%	99.59%	99.34%	98.36%
3#	120.60	121.00	119.90	120.10	119.10	100.00%	100.33%	99.42%	99.59%	98.76%
4#	111.20	112.30	110.50	110.90	108.70	100.00%	100.99%	99.37%	99.73%	97.75%
5#	111.80	111.80	111.30	111.30	110.70	100.00%	100.00%	99.55%	99.55%	99.02%
6#	119.90	120.60	119.30	119.60	118.30	100.00%	100.58%	99.50%	99.75%	98.67%
7#	119.70	120.30	118.70	118.50	117.20	100.00%	100.50%	99.16%	99.00%	97.91%
8#	110.80	111.80	110.10	110.40	108.90	100.00%	100.90%	99.37%	99.64%	98.29%
9#	110.40	110.60	110.00	109.70	109.30	100.00%	100.18%	99.64%	99.37%	99.00%
10#	118.80	119.00	117.60	116.90	116.30	100.00%	100.17%	98.99%	98.40%	97.90%
11#	122.00	122.60	121.10	120.90	120.40	100.00%	100.49%	99.26%	99.10%	98.69%
12#	111.40	112.60	110.70	111.10	109.30	100.00%	101.08%	99.37%	99.73%	98.11%
13#	113.90	114.10	113.30	113.30	113.10	100.00%	100.18%	99.47%	99.47%	99.30%
14#	121.10	121.60	120.30	120.50	119.40	100.00%	100.41%	99.34%	99.50%	98.60%
15#	118.30	118.80	117.40	117.60	116.40	100.00%	100.42%	99.24%	99.41%	98.39%
16#	111.00	112.00	110.50	111.00	109.30	100.00%	100.90%	99.55%	100.00%	98.47%
17#	109.40	109.30	108.50	108.40	108.40	100.00%	99.91%	99.18%	99.09%	99.09%
18#	120.20	120.90	119.50	119.60	118.80	100.00%	100.58%	99.42%	99.50%	98.84%
19#	117.20	117.60	117.00	117.80	117.20	100.00%	100.34%	99.83%	100.51%	100.00%
20#	110.50	111.70	110.10	110.00	108.40	100.00%	101.09%	99.64%	99.55%	98.10%
Max	122.10	122.80	121.60	121.30	120.40	100.00%	101.09%	99.83%	100.51%	100.00%
Min	109.40	109.30	108.50	108.40	108.40	100.00%	99.91%	98.99%	98.40%	97.75%
Avg	115.54	116.11	114.88	114.96	113.94	100.00%	100.50%	99.43%	99.50%	98.62%

序号	VF (V)					ΔVF			
	0Cycle	100Cycles	300Cycles	500Cycles	1000Cycles	100Cycles	300Cycles	500Cycles	1000Cycles
1#	9.046	9.045	9.033	9.042	9.047	-0.001	-0.013	-0.004	0.001
2#	9.212	9.209	9.197	9.209	9.212	-0.003	-0.015	-0.003	0.000
3#	9.159	9.156	9.145	9.156	9.160	-0.003	-0.014	-0.003	0.001
4#	9.156	9.150	9.140	9.151	9.156	-0.006	-0.016	-0.005	0.000
5#	9.084	9.082	9.071	9.082	9.086	-0.002	-0.013	-0.002	0.002
6#	9.142	9.139	9.127	9.139	9.144	-0.003	-0.015	-0.003	0.002
7#	9.073	9.070	9.058	9.070	9.068	-0.003	-0.015	-0.003	-0.005
8#	9.085	9.080	9.070	9.082	9.079	-0.005	-0.015	-0.003	-0.006
9#	9.160	9.157	9.145	9.158	9.158	-0.003	-0.015	-0.002	-0.002
10#	9.047	9.043	9.033	9.035	9.045	-0.004	-0.014	-0.012	-0.002
11#	9.173	9.171	9.159	9.161	9.173	-0.002	-0.014	-0.012	0.000
12#	9.054	9.052	9.040	9.053	9.039	-0.002	-0.014	-0.001	-0.015
13#	9.218	9.215	9.203	9.215	9.200	-0.003	-0.015	-0.003	-0.018
14#	9.207	9.208	9.212	9.233	9.195	0.001	0.005	0.026	-0.012
15#	9.058	9.060	9.065	9.085	9.048	0.002	0.007	0.027	-0.010
16#	9.050	9.046	9.036	9.047	9.050	-0.004	-0.014	-0.003	0.000
17#	9.110	9.105	9.092	9.105	9.109	-0.005	-0.018	-0.005	-0.001
18#	9.146	9.140	9.129	9.140	9.144	-0.006	-0.017	-0.006	-0.002
19#	9.199	9.195	9.185	9.196	9.199	-0.004	-0.014	-0.003	0.000
20#	9.079	9.075	9.063	9.074	9.079	-0.004	-0.016	-0.005	0.000

检测报告(简版)

报告编号: LAB0206014-01

第 5 页共 6 页

序号	IF (mA)				
	0Cycle	100Cycles	300Cycles	500Cycles	1000Cycles
1#	100.01	100.01	100.01	99.98	100.00
2#	100.01	100.01	100.01	100.00	100.01
3#	100.01	100.01	100.00	100.00	100.01
4#	100.00	100.01	100.01	100.00	100.01
5#	100.01	100.01	100.01	99.98	100.01
6#	100.00	100.01	100.01	99.98	100.00
7#	100.01	100.00	100.01	99.98	100.00
8#	100.01	100.01	100.00	100.00	100.00
9#	100.01	100.01	100.00	99.98	100.01
10#	100.00	100.00	100.01	100.00	100.01
11#	100.00	100.00	100.01	100.00	100.01
12#	100.01	100.00	100.01	99.98	100.01
13#	100.01	100.01	100.00	99.98	100.01
14#	100.01	100.01	100.01	100.00	100.01
15#	100.01	100.00	100.01	100.00	100.01
16#	100.01	100.00	100.01	100.00	100.01
17#	100.00	100.00	100.01	99.98	100.01
18#	100.01	100.00	100.00	99.98	100.01
19#	100.00	100.00	100.00	99.98	100.01
20#	100.01	100.01	100.01	100.00	100.01

序号	x					△x			
	0Cycle	100Cycles	300Cycles	500Cycles	1000Cycles	100Cycles	300Cycles	500Cycles	1000Cycles
1#	0.3107	0.3112	0.3103	0.3093	0.3074	0.0005	-0.0004	-0.0014	-0.0033
2#	0.3147	0.3147	0.3142	0.3128	0.3106	0.0000	-0.0005	-0.0019	-0.0041
3#	0.3109	0.3108	0.3107	0.3098	0.3081	-0.0001	-0.0002	-0.0011	-0.0028
4#	0.3130	0.3132	0.3126	0.3115	0.3085	0.0002	-0.0004	-0.0015	-0.0045
5#	0.3124	0.3125	0.3121	0.3114	0.3090	0.0001	-0.0003	-0.0010	-0.0034
6#	0.3108	0.3110	0.3105	0.3099	0.3076	0.0002	-0.0003	-0.0009	-0.0032
7#	0.3118	0.3117	0.3112	0.3098	0.3080	-0.0001	-0.0006	-0.0020	-0.0038
8#	0.3101	0.3101	0.3096	0.3085	0.3063	0.0000	-0.0005	-0.0016	-0.0038
9#	0.3100	0.3103	0.3098	0.3084	0.3063	0.0003	-0.0002	-0.0016	-0.0037
10#	0.3091	0.3092	0.3085	0.3065	0.3041	0.0001	-0.0006	-0.0026	-0.0050
11#	0.3137	0.3137	0.3133	0.3113	0.3089	0.0000	-0.0004	-0.0024	-0.0048
12#	0.3098	0.3098	0.3093	0.3083	0.3063	0.0000	-0.0005	-0.0015	-0.0035
13#	0.3136	0.3137	0.3133	0.3122	0.3105	0.0001	-0.0003	-0.0014	-0.0031
14#	0.3150	0.3150	0.3142	0.3132	0.3108	0.0000	-0.0008	-0.0018	-0.0042
15#	0.3122	0.3122	0.3114	0.3101	0.3079	0.0000	-0.0008	-0.0021	-0.0043
16#	0.3119	0.3119	0.3115	0.3110	0.3090	0.0000	-0.0004	-0.0009	-0.0029
17#	0.3101	0.3100	0.3096	0.3081	0.3063	-0.0001	-0.0005	-0.0020	-0.0038
18#	0.3126	0.3128	0.3120	0.3108	0.3085	0.0002	-0.0006	-0.0018	-0.0041
19#	0.3125	0.3125	0.3122	0.3120	0.3103	0.0000	-0.0003	-0.0005	-0.0022
20#	0.3095	0.3097	0.3093	0.3084	0.3062	0.0002	-0.0002	-0.0011	-0.0033

检测报告(简版)

报告编号: LAB0206014-01

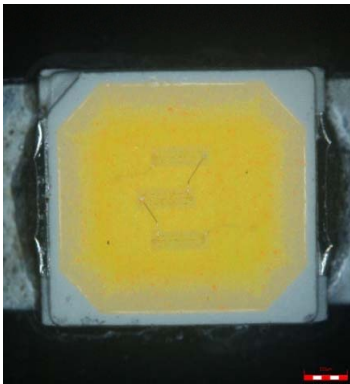
第 6 页共 6 页

序号	y					Δy			
	0Cycle	100Cycles	300Cycles	500Cycles	1000Cycles	100Cycles	300Cycles	500Cycles	1000Cycles
1#	0.3337	0.3345	0.3325	0.3303	0.3272	0.0008	-0.0012	-0.0034	-0.0065
2#	0.3419	0.3421	0.3403	0.3374	0.3334	0.0002	-0.0016	-0.0045	-0.0085
3#	0.3356	0.3352	0.3346	0.3330	0.3298	-0.0004	-0.0010	-0.0026	-0.0058
4#	0.3346	0.3347	0.3333	0.3312	0.3257	0.0001	-0.0013	-0.0034	-0.0089
5#	0.3357	0.3360	0.3350	0.3334	0.3291	0.0003	-0.0007	-0.0023	-0.0066
6#	0.3336	0.3341	0.3326	0.3310	0.3264	0.0005	-0.0010	-0.0026	-0.0072
7#	0.3380	0.3376	0.3362	0.3332	0.3298	-0.0004	-0.0018	-0.0048	-0.0082
8#	0.3329	0.3325	0.3314	0.3292	0.3256	-0.0004	-0.0015	-0.0037	-0.0073
9#	0.3312	0.3319	0.3303	0.3274	0.3236	0.0007	-0.0009	-0.0038	-0.0076
10#	0.3341	0.3342	0.3324	0.3284	0.3240	0.0001	-0.0017	-0.0057	-0.0101
11#	0.3381	0.3381	0.3368	0.3334	0.3291	0.0000	-0.0013	-0.0047	-0.0090
12#	0.3360	0.3360	0.3343	0.3323	0.3287	0.0000	-0.0017	-0.0037	-0.0073
13#	0.3410	0.3413	0.3400	0.3377	0.3342	0.0003	-0.0010	-0.0033	-0.0068
14#	0.3388	0.3385	0.3368	0.3346	0.3304	-0.0003	-0.0020	-0.0042	-0.0084
15#	0.3337	0.3337	0.3320	0.3295	0.3257	0.0000	-0.0017	-0.0042	-0.0080
16#	0.3346	0.3344	0.3335	0.3320	0.3282	-0.0002	-0.0011	-0.0026	-0.0064
17#	0.3329	0.3326	0.3313	0.3283	0.3249	-0.0003	-0.0016	-0.0046	-0.0080
18#	0.3374	0.3375	0.3358	0.3333	0.3293	0.0001	-0.0016	-0.0041	-0.0081
19#	0.3373	0.3376	0.3371	0.3366	0.3336	0.0003	-0.0002	-0.0007	-0.0037
20#	0.3320	0.3321	0.3308	0.3285	0.3249	0.0001	-0.0012	-0.0035	-0.0071

单颗LED判定基准:

项目	min	max
Lumen Maintenance (%)	90%	110%
ΔVF	-0.5	0.5
Δx	-0.01	0.01
Δy	-0.015	0.015
外观无胶裂, 变黄, 发黑等现象		

经过1000cycles冷热冲击试验, 全部样品各项参数均在标准范围内。
外观描述: 样品外观正常, 如下图所示



试验结果: 合格

备注: 检测结果只对本次样品负责;

.....结束.....